

AERMOD Cloud®

Gaussian Plume Air Dispersion Model

A truly integrated AERMOD modelling system, consists of pre-processors, like AERMET, AERMAP and BPIPRM and model within ONE interface for smooth flow of data. AERMOD model is used extensively for Environmental Impact Assessment (EIA) studies to assess air pollution concentration in ambient air.

System requirements: Windows 10, 1.6 GHz or higher, 4 GB RAM, Mouse or other pointing device, Internet Connection

Envitrans Private Limited, 3F-CS-70, Ansal Plaza, Vaishali, Ghaziabad 201010 UP India | Phone: +91.88 00 49 49 11, Email: sales@envitrans.com

Envitrans and AERMOD Cloud are registered trademarks

Integrated Graphical User Interface

Fully integrated interface, easy to add objects like sources, receptors, buildings, plot isopleth, wind rose and reporting.

Quick Project Setup

The application allows you to quickly setup. You can setup your project by specifying a reference point in Latitude, Longitude and modelling domain radius.

Geo-Referenced Base Maps

Automatically Download geo-referenced Base Maps.

Terrain Processor - AERMAP

Terrain processing capabilities using DEM terrain data file format. There is inbuilt elevation data.

Odour Modelling

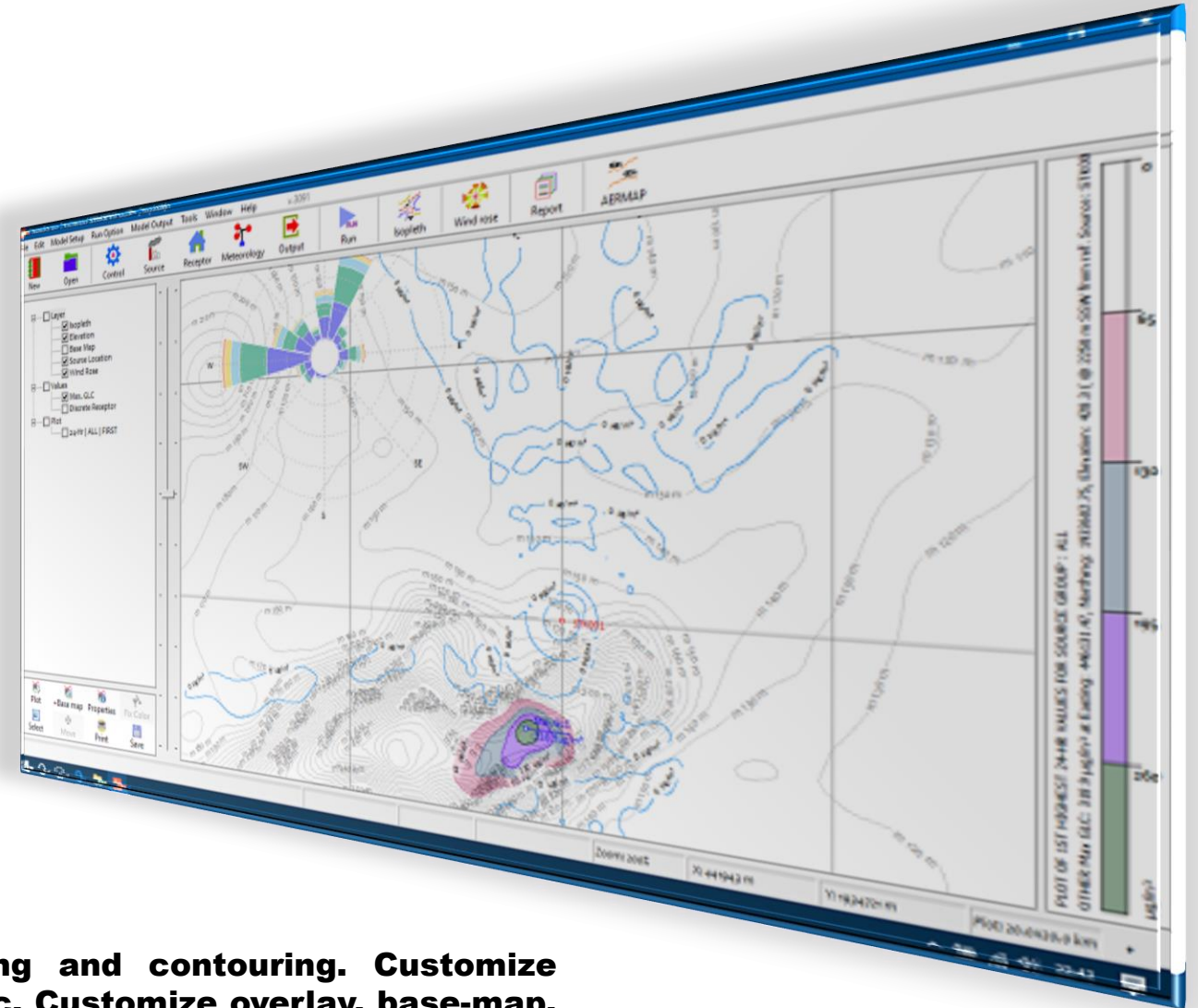
Set Emission Unit to Odour Units (OU) for modelling odour due to multiple-pollutant.

Visualization: Overlay Outputs

Integrated post-processing with automatic gridding and contouring. Customize isopleth levels, colour, transparency, labels, fonts etc. Customize overlay, base-map, terrain contour, max GLC, GLC at discrete receptor, wind rose etc.

Multiple Sources:

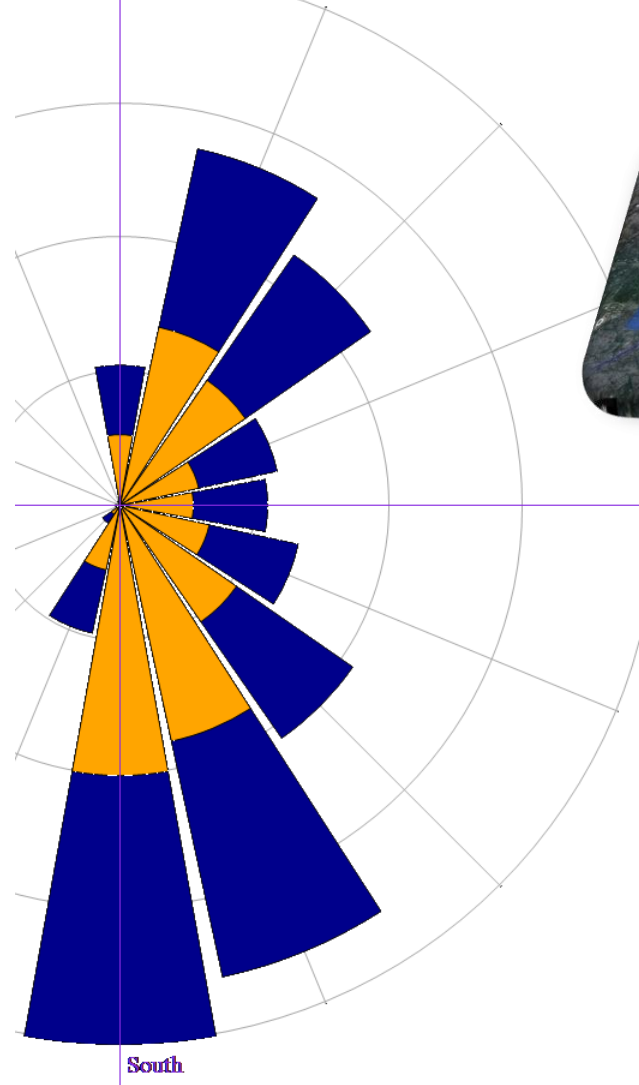
- ✓ **Point** (*Vertical, Horizontal, Capped*)
- ✓ **Area**
- ✓ **Volume**
- ✓ **Open Pit**
- ✓ **Line**
- ✓ **Circular Area**
- ✓ **Polygon Area**





ENVITRANS[®] is a specialist environmental service provider in India with key expertise in the fields of computational modelling, meteorological data processing, environmental information management systems (EIMS) development and training.

System requirements: Windows 10, 11, 2GHz or higher, 8 GB RAM, Mouse or other pointing device, Internet Connection



East

Export to Google Earth™

This exciting feature allows you to export isopleth into Google Earth as KML file.

Meteorological Pre-Processors

Several tools are available for easy processing of meteorological data for AERMOD and ISC models. District wise mixing height data is inbuilt with in ISCST3 met-processor.

Wind Rose

Wind rose plots can be generated automatically from surface data files (*.sfc) and ISCST3 model-ready files.

PAYGo

In our continual effort to serve the environmental professionals better, ENVITRANS has come forward with an economical option to purchase AERMODCloud via the pay as you go model. This option lets you access software on a quarterly, or annual basis, so you can control your costs and your commitments.