



Free-field Sound Propagation Model

A computer program developed to undertake construction, industrial and traffic noise propagation modelling for which an environmental noise assessment may be required.

The ISO 9613-2 General noise calculation model was used which considers frequency dependant attenuation due to geometric divergence, atmospheric absorption, and ground effect.

INR 65,000/- + GST @ 18%

**System requirements: Windows 10 or Windows 11, 2 GHz or higher, 8 GB RAM, Mouse or other pointing device, Internet Connection**

*Envitrans and dhwaniPRO are registered trademarks*

ALL PRODUCT, PRODUCT SPECIFICATIONS AND DATA ARE SUBJECT TO CHANGE WITHOUT NOTICE TO IMPROVE RELIABILITY, FUNCTION OR DESIGN OR OTHERWISE.





**A variety of scenarios can be created quickly in dhwaniPRO®, allowing the user to determine the impact of changing the source, layout and adding/removing the effects of shielding due to noise mitigation devices such as barriers.**

### Quick Project Setup

**The application allows you to quickly setup. You can setup your project by specifying a reference point in latitude, longitude and modelling domain. Menu-driven data entry, a digitizer to place source, receptor and barriers using mouse.**

### Geo-Referenced Base Maps

**Automatically Download geo-referenced Base Maps.**

### Attenuation

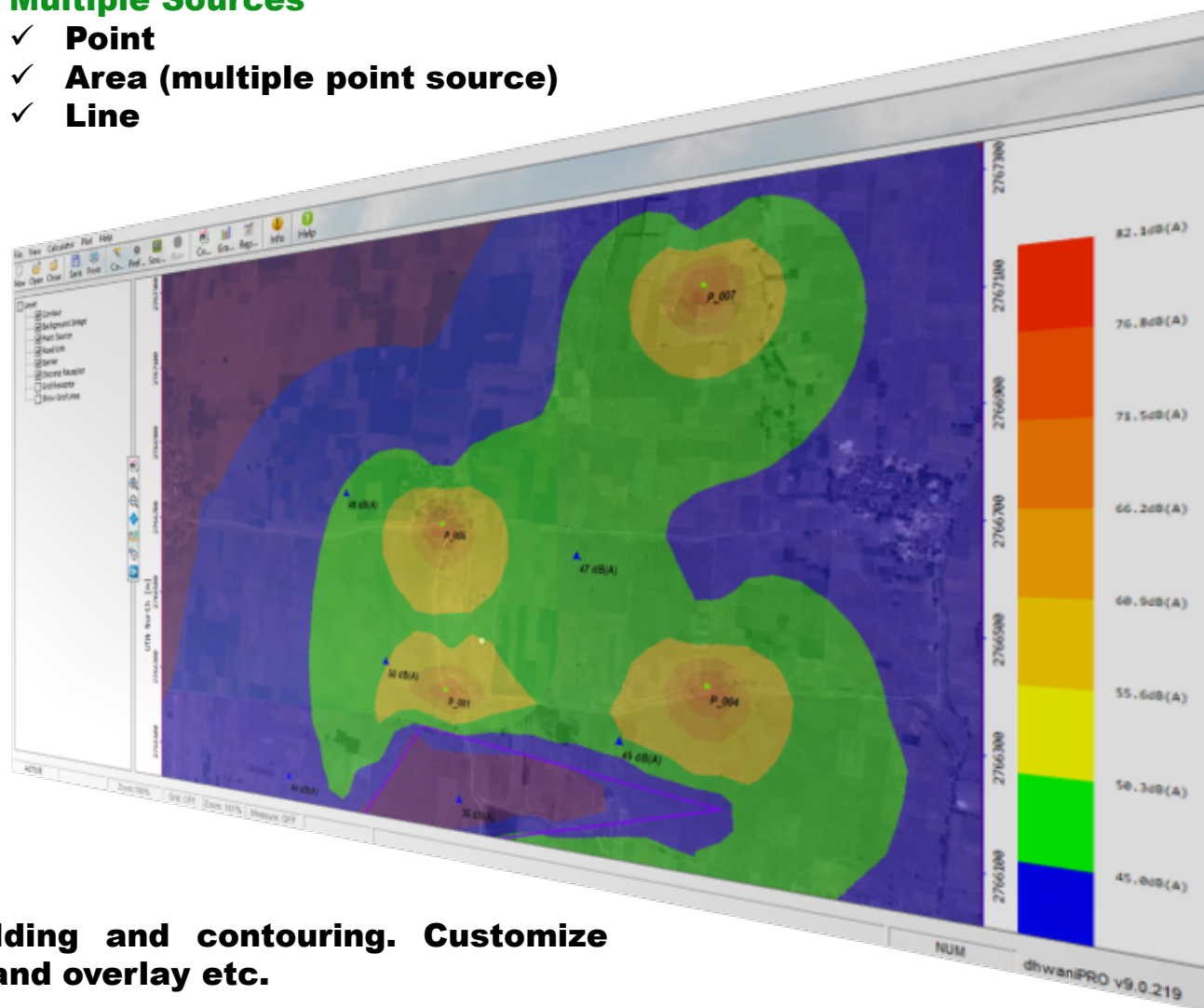
**The ISO 9613 noise calculation model is used to estimate the attenuations due to Atmospheric Absorption, Geometric divergence and barrier.**

### Visualization: Overlay Outputs

**Integrated post-processing with automatic gridding and contouring. Customize contour levels, colour, transparency, labels, fonts and overlay etc.**

### Multiple Sources

- ✓ **Point**
- ✓ **Area (multiple point source)**
- ✓ **Line**

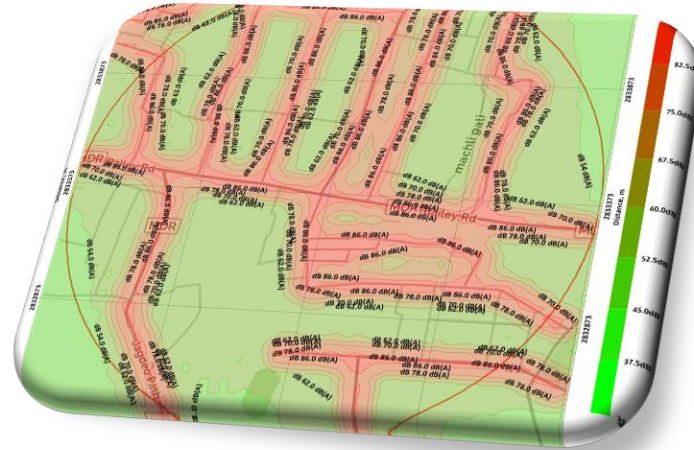




**envitrans**  
transforming data into information

#startupindia

ENVITRANS® is a specialist environmental service provider in India with key expertise in the fields of computational modelling, meteorological data processing, environmental information management systems (EIMS) development and training.



### Impact Zone

**Determine impact zones to develop mitigation plans in compliance with noise emissions from multiple noise sources. Easily predict noise levels at multiple receivers.**

### Output

**Result visualization through customized graphs and sound level contours, barrier insertion loss, and sound-level difference contours. Export contours as bmp, png, jpg, emf etc. The results can also be displayed in tabular format or exported in Microsoft EXCEL file.**

### Export to Google Earth™

**This exciting feature allows you to export isopleth into Google Earth as KML file.**

#### PAYGo

*In our continual effort to serve the environmental professionals better, ENVITRANS has come forward with an economical option to purchase via the pay-as-you-go model. This option lets you access our software on a quarterly, or annual basis, so you can control your costs and your commitments.*

**System requirements:** Windows 10 or Windows 11, 2.0 GHz or higher, 4 GB RAM, Mouse or other pointing device, Internet Connection

ALL PRODUCT, PRODUCT SPECIFICATIONS AND DATA ARE SUBJECT TO CHANGE WITHOUT NOTICE TO IMPROVE RELIABILITY, FUNCTION OR DESIGN OR OTHERWISE.

INR 65,000/- + GST @ 18%

 [www.envitrans.com](http://www.envitrans.com)  [sales@envitrans.com](mailto:sales@envitrans.com)  +91. 88 00 49 49 11